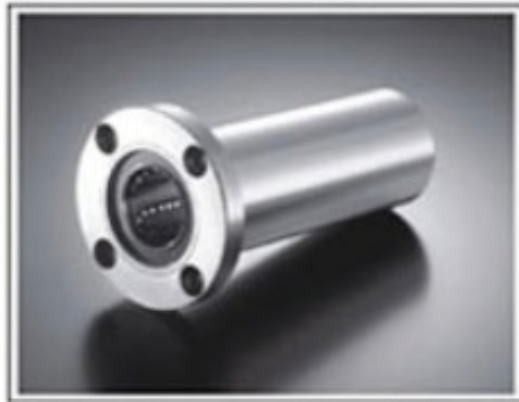
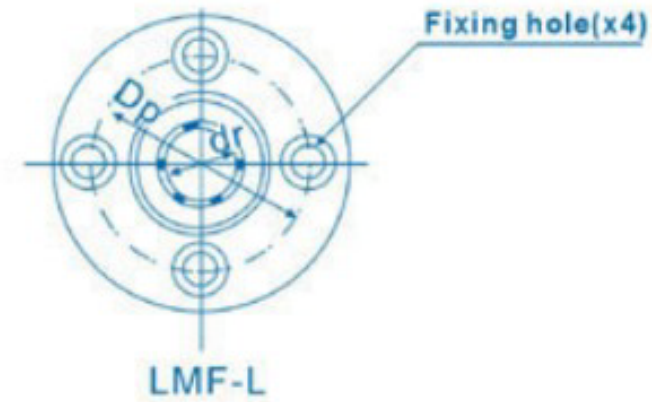
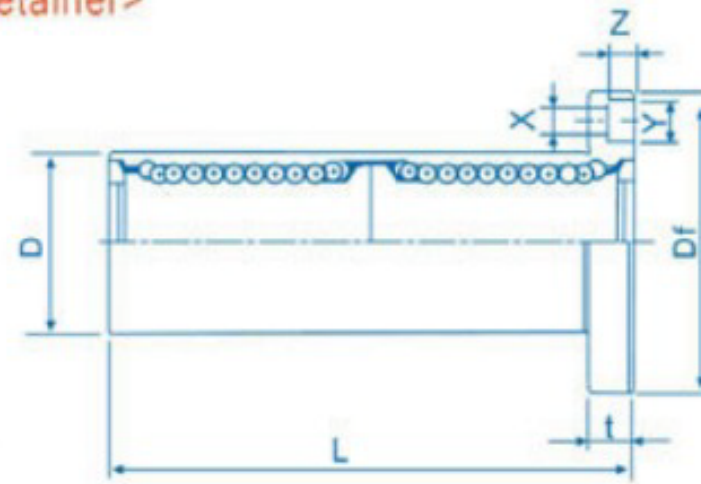


LMF-L <Built-in Synthetic Resin Retainer>



This type is a metric dimension series widely used in Japan and other countries.

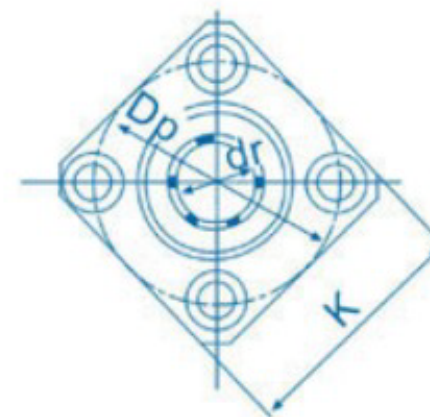
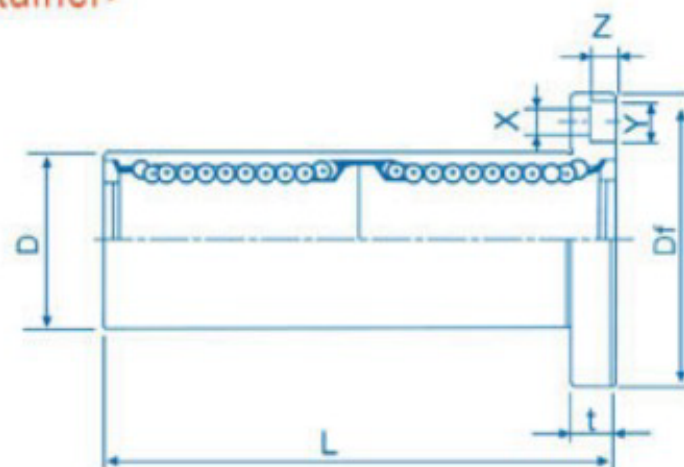


Nominal Part No.		Major Dimensions and Tolerance (mm)										Eccentricity μm	Squareness μm	Basic Load Rating		Nominal Part No.
Standard Type	Ball Circuit Weight g	Dr	D	L	Flange						Dynamic CN			Static CoN		
Seal Type		Tolerance	Tolerance	Tolerance	Df	t	Dp	X	Y	Z						
LMF 6L LMF 6L UU	4 31	6	12 0	35	28	5	20	3.5	6.5	3.1	15	15	323	530	LMF 6L	
LMF 8L LMF 8L UU	4 51	8	15 -0.013	45	32	5	24	3.5	6.5	3.1	15	15	431	784	LMF 8L	
LMF 10L LMF 10L UU	4 98	10 0	19	55	40	6	29	4.5	8	4.1	15	15	588	1,100	LMF 10L	
LMF 12L LMF 12L UU	4 110	12 -0.010	21 0	57	42	6	32	4.5	8	4.1	15	15	813	1,570	LMF 12L	
LMF 13L LMF 13L UU	4 130	13	23	61	43	6	33	4.5	8	4.1	15	15	813	1,570	LMF 13L	
LMF 16L LMF 16L UU	5 190	16	-0.016	70 -0.3	48	6	38	4.5	8	4.1	15	15	1,230	2,350	LMF 16L	
LMF 20L LMF 20L UU	5 260	20	28 32	80	54	8	43	5.5	9.5	5.1	20	20	1,400	2,740	LMF 20L	
LMF 25L LMF 25L UU	6 540	25 0	40 0	112	62	8	51	5.5	9.5	5.1	20	20	1,560	3,140	LMF 25L	
LMF 30L LMF 30L UU	6 680	30 -0.012	45 -0.019	123	74	10	60	6.6	11	6.1	20	20	2,490	5,490	LMF 30L	
LMF 35L LMF 35L UU	6 1,020	35 0	52 0	135	82	10	67	6.6	11	6.1	25	25	2,650	6,270	LMF 35L	
LMF 40L LMF 40L UU	6 1,570	40 -0.015	60 -0.002	151	96	13	78	9	14	8.1	25	25	3,430	8,040	LMF 40L	
LMF 50L LMF 50L UU	6 3,600	50 0	80 0	192	116	13	98	9	14	8.1	25	25	6,080	15,900	LMF 50L	
LMF 60L LMF 60L UU	6 4,500	60 -0.020	90 -0.025	209	134	18	112	11	17.5	11.1	30	30	7,550	20,000	LMF 60L	

LMK-L <Built-in Synthetics Resin Retainer>



This type is a metric dimension series widely used in Japan and other countries.



LMK-L

Nominal Part No.		Major Dimensions and Tolerance (mm)											Eccentricity μm	Squareness μm	Basic Load Rating		Nominal Part No.
Standard Type	Ball Circuit Weight g	Dr	D	L	Flange							Dynamic CN			Static CoN		
Seal Type		Tolerance	Tolerance	Tolerance	Df	k	t	Dp	X	Y	Z						
LMK 6L LMK6L UU	4 25	6	12 0	35	28	22	5	20	3.5	6.5	3.1	15	15	323	530	LMK6L	
LMK8L LMK8L UU	4 43	8	15 -0.013	45	32	25	5	24	3.5	6.5	3.1	15	15	431	784	LMK8L	
LMK10L LMK10L UU	4 78	10 0	19	55	40	30	6	29	4.5	8	4.1	15	15	588	1,100	LMK10L	
LMK12L LMK12L UU	4 90	12 -0.010	21 0	57	42	32	6	32	4.5	8	4.1	15	15	813	1,570	LMK12L	
LMK13L LMK13L UU	4 108	13	23	61	43	34	6	33	4.5	8	4.1	15	15	813	1,570	LMK13L	
LMK16L LMK16L UU	5 168	16	-0.016	70 -0.3	48	37	6	38	4.5	8	4.1	15	15	1,230	2,350	LMK16L	
LMK20L LMK20L UU	5 225	20	28 32	80	54	42	8	43	5.5	9.5	5.1	20	20	1,400	2,740	LMK20L	
LMK25L LMK25L UU	6 500	25 0	40 0	112	62	50	8	51	5.5	9.5	5.1	20	20	1,560	3,140	LMK25L	
LMK30L LMK30L UU	6 590	30 -0.012	45 -0.019	123	74	58	10	60	6.6	11	6.1	20	20	2,490	5,490	LMK30L	
LMK35L LMK35L UU	6 930	35 0	52 0	135	82	64	10	67	6.6	11	6.1	25	25	2,650	6,270	LMK35L	
LMK40L LMK40L UU	6 1,380	40 -0.015	60 -0.002	151	96	75	13	78	9	14	8.1	25	25	3,430	8,040	LMK40L	
LMK50L LMK50L UU	6 3,400	50 0	80 0	192	116	92	13	98	9	14	8.1	25	25	6,080	15,900	LMK50L	
LMK60L LMK60L UU	6 4,060	60 -0.020	90 -0.025	209	134	106	18	112	11	17.5	11.1	30	30	7,550	20,000	LMK60L	